

# Meadow View

Farmington, Utah



Built for the Way  
You Want to Live!

[www.MeadowViewUtah.com](http://www.MeadowViewUtah.com)



**CLEARWATER**  
HOMES



# Great Farmington Location

*Meadow View* is conveniently located in Farmington within 1 mile of the new Station Park shopping district and the Farmington UTA Frontrunner station. Leave your car at home and enjoy a comfortable trip into downtown Salt Lake City for work or play. Enjoy the open air living of *Meadow View* with panoramic views on large basement lots with the amenities of Station Park—shopping, restaurants, parks and schools all less than two miles away.

For more information, or a personal tour contact:

**Sarah Mayer**

801.218.2885

[sarah@clearwaterhomesutah.com](mailto:sarah@clearwaterhomesutah.com)

**Model Home Address**

1563 Spring Meadow Lane  
Farmington, UT 84025

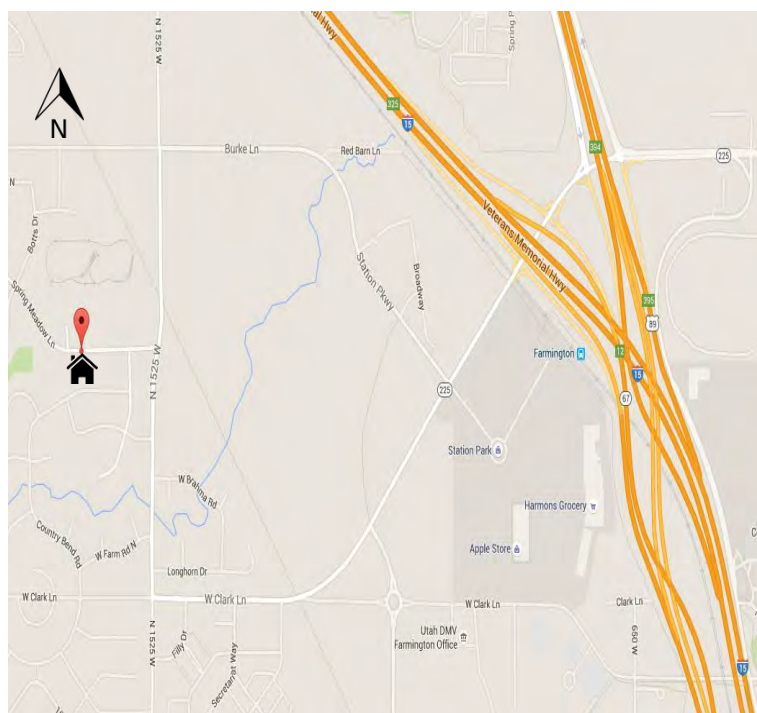


Get news and updates on Facebook



Watch video tours on YouTube

## Visit Our Model Home



[Click here to view a map online](#)

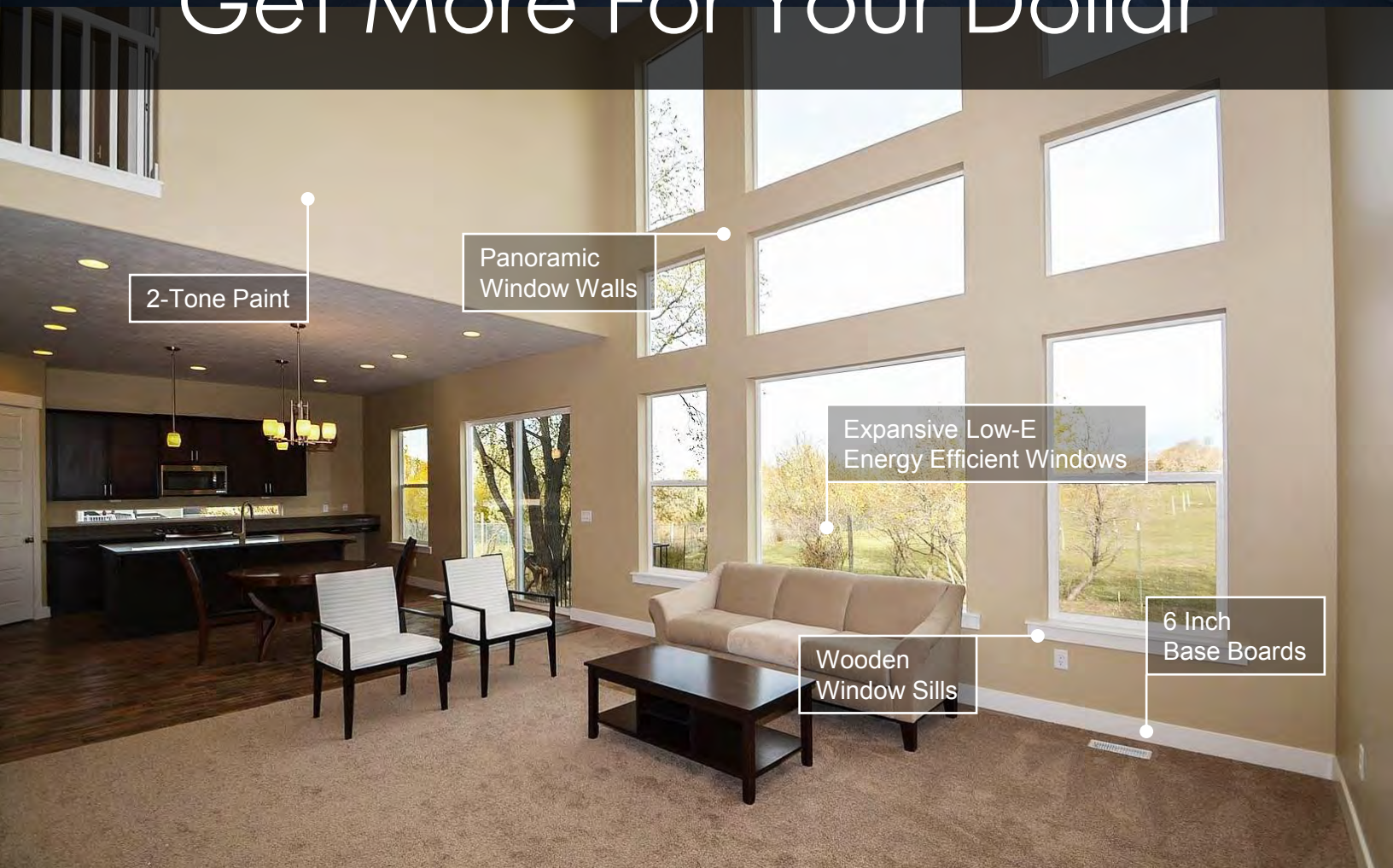


Front Porch Lighting

Porch Swing

8 Foot Deep Front Porch

# Get More For Your Dollar



2-Tone Paint

Panoramic Window Walls

Expansive Low-E Energy Efficient Windows

Wooden Window Sills

6 Inch Base Boards



Pendant Lighting \*

Energy Efficient Lighting

6 Inch Trim

Shaker Panel Beech Cabinets

8 Foot Doors On Main Floor

42" Upper Cabinets With Crown Molding

Moen Fixtures

Transom Window \*

Stainless Steel Sink

Kwikset Satin Nickel Hardware

Luxury Laminate Wood Floors

3cm Granite Countertops

Stainless Steel Appliances

Trash Pull Out

\*\* Optional Upgrade Items



42" Shower with  
Cultured Marble Surround

Oversized Kohler  
Soaker Bathtub

# Generous 5-Piece Master Baths



3cm Granite  
Counters

Moen Fixtures

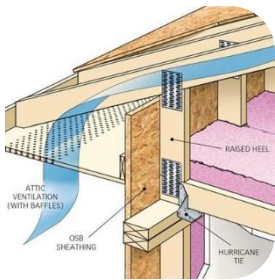
Tile Floors

Shaker Panel  
Beech Cabinets



# Built to Conserve Energy

An energy efficient home is a more comfortable home. Insulation is a critical component to an energy efficient home and Clearwater Homes implements several techniques into our building process to ensure maximum insulation.



## Raised-Heel Roof Trusses

Raised-heel trusses are engineered utilizing advanced design and manufacturing techniques to meet modern building codes and improve energy efficiency. Raised-heel trusses differ from their conventional truss counterparts in that they are fitted with a heel where the bottom chord intersects with the perimeter wall plate which raises the top chord. This provides additional space for better insulation.



## Advanced Framing Techniques

By using 2"x6" exterior walls instead of conventional 2"x4" walls, and spacing studs 24" on center (instead of the standard 16" apart) We're able to make significant gains in insulation. Wood is a poor insulator, so by incorporating these innovations we're able to include more insulation (up to 57 cubic feet), save lumber (20% less) and give you a higher performing home.



## Air Tight Building Envelope

Joist ends can be a significant source of air-leakage. Drafts can be pulled through the house into walls and holes created by plumbing pipes and electrical conduit. Clearwater Homes uses polystyrene spray foam to air-seal and insulate all joist ends. Unlike conventional batt insulation, the spray foam won't sag and it performs as a super-tight air barrier and insulator, contributing to improved energy efficiency.

# Included Features

## Community Amenities

- Excellent Farmington location
- Amazing mountain views
- Station Park Shopping
- UTA Frontrunner Station
- Walking distance to movie theater, schools and parks
- Public streets and maintenance

## Interiors

- Your choice of Interior Finishes and Colors
- Luxury Laminate Wood Flooring in Entryway, Kitchen and Dining Nook
- Short Pile Carpet with upgraded 3/8" 6lb rebound pad
- Upgraded 2-Tone Paint throughout
- 10' Main Floor Ceilings (Rambler Plans)
- 9' Main Floor Ceilings (2-story plans)
- 9' Upper Floor Ceilings (2-story Plans)
- 9' Foundation Walls with Oversized 5'x4' Basement Windows
- 16 Designer Can Lights (buyer's choice of location)
- Low Voltage: Two Phone Jacks and 4 TV Jacks with Conduit in one location
- Prewire for Ceiling Fan in Great Room
- Craftsman/Prairie Style 6" Baseboards with 3.5" Door Casings and 6" Headers
- Painted MDF Wood Window Sills with Apron
- Painted Open Railing at Stairway
- Painted Bread loaf Style Handrail
- Kwikset Hancock Satin Nickel Hardware
- 2x6 Exterior Wall Framing with R-19 Wall Insulation (per plan, some exclusions apply)
- Energy Heel Roof Trusses with R-38 Attic Insulation
- 2lb Spray Foam Insulation in Rim Joists for a tight Envelope
- TJI Floor Joists
- Expansive Low E Energy Efficient Windows
- 90% Energy Efficient Lennox Furnace
- Lennox 13 Seer Central Air Conditioning System
- 50 Gallon Hot Water Heater
- Your choice of Interior Finishes and Colors

## Exteriors

- Desirable elevations with Stucco and Hardie Siding Accents with rock wainscot.
- Front Yard Landscape complete with sod, sprinklers, 2 trees, and 4 shrubs.
- Maintenance Free Trex Landing and Stairs to 10x10 concrete patio
- Gas Line at Back of House for Outdoor Fireplace or Grill (stubbed with shut-off valve)
- Oversized Covered Front Porch
- 30 Year Architectural Grade Shingles with 110 MPH Lifetime Wind Warranty
- Attached 2 car garage with 8' Door with Opener, 2 remotes and Keyless Entry

## Kitchens

- 3cm Granite Countertops
- Shaker Panel Beech Kitchen Cabinets with 42" Uppers and Crown Molding
- Luxury Laminate Wood Flooring
- GE Stainless Steel Appliance Package with 30" Gas Range, Over the Range Microwave and Dishwasher
- Moen Chrome Faucet (Eva or Brantford style)
- Spacious Island with Overhang

## Bathrooms

- Shaker Panel Beech Cabinets
- Tile Flooring
- Oversized Kohler Soaker Tub (Master Bath)
- Separate 42"x42" Shower with Cultured Marble Surround and Glass Door (Master Bath)
- Adult Height Vanity with double sinks and 3cm Granite Countertop (Master Bath)
- Moen Chrome Faucets (Eva or Brantford Style)
- Comfort Height Elongated Toilet (Master Bath)



# More Space & Natural Light



## Taller Ceilings Add More Volume

Open living begins as soon you walk in the door. You might be surprised at the significant difference 9' ceilings can make vs. the more conventional 8' ceilings in regards to the overall spacious feeling of a home.



## Panoramic Windows & Large Basement Windows

Large panoramic windows open up the rooms, bring in the warmth of the sun during the day, cool breezes in the evening, and create focal points for each room. Basements include large 5' X 4' windows standard.



## Large & Inviting Front Porches

Large front porches provide an immediate connection to your community and encourage you to visit with your neighbors. All of our floor plans include front porches along with a porch swing.



# Floor Plan Overview

## Ramblers

### Tofino

---

3 Bedroom / 2 Bathroom

Main Floor	1,800 sq ft
Unfinished Basement	1,940 sq ft
<b>Total Finished</b>	<b>1,800 sq ft</b>

## 2-Story

### Newport

---

2-4 Bedroom / 3 Bathroom

Main Floor	1,085 sq ft
Second Floor	1,415 sq ft
Unfinished Basement	998 sq ft
<b>Total Finished</b>	<b>2,500 sq ft</b>

### Cardiff

---

4-5 Bedroom / 3 Bathroom

Main Floor	1,237 sq ft
Second Floor	1,669 sq ft
Unfinished Basement	1,247 sq ft
<b>Total Finished</b>	<b>2,906 sq ft</b>

## 2-Story (Main Floor Master Bedroom)

### Rincon

---

5 Bedroom / 2 Bathroom

Main Floor	1,578 sq ft
Second Floor	951 sq ft
Unfinished Basement	1,493 sq ft
<b>Total Finished</b>	<b>2,529 sq ft</b>

### Maverick

---

4 Bedroom / 4 Bathroom

Main Floor	2,037 sq ft
Second Floor	995 sq ft
Unfinished Basement	1,882 sq ft
<b>Total Finished</b>	<b>3,032 sq ft</b>

# Tofino Floor Plan



## Square Footage

**Main Floor: 1,800**

**Basement: 1,940**

**Total Livable: 3,740\***

## Room Options

**Bedrooms: 3**

**Bathrooms: 2**

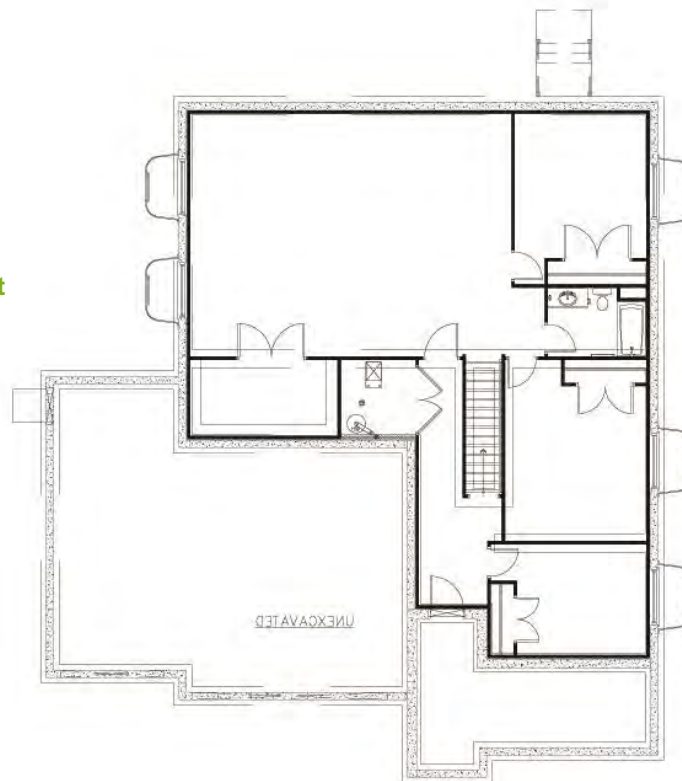
**Garage: 2 or 3 car**

\* Total livable space includes the finished basement option

**Main Floor**



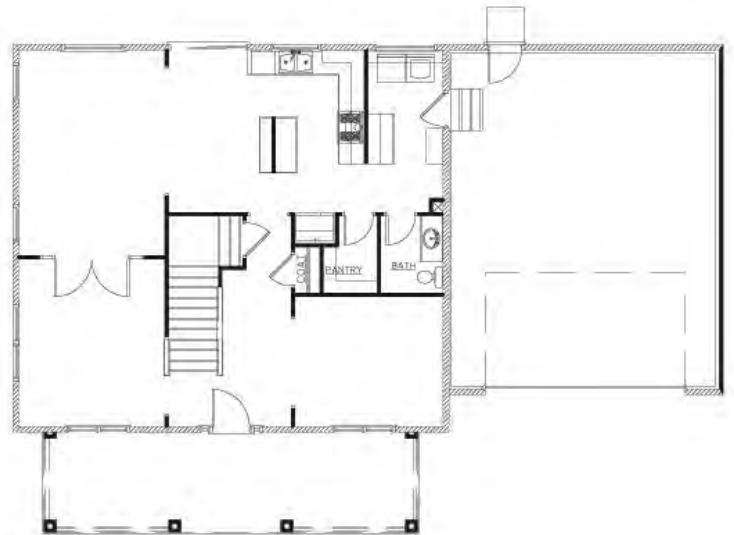
**Basement**



# Newport Floor Plan



Main Floor



## Square Footage

Main Floor: 1,085  
Second Floor: 1,415  
Basement: 998

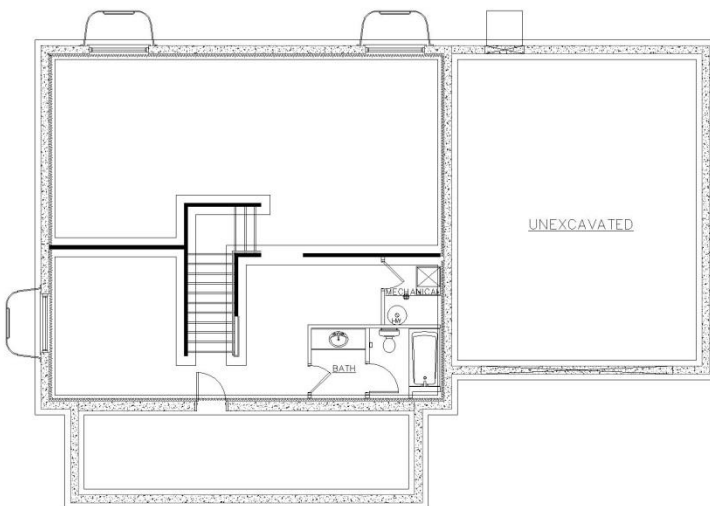
## Room Options

Bedrooms: 2 - 4  
Bathrooms: 3  
Garage: 2 or 3 car

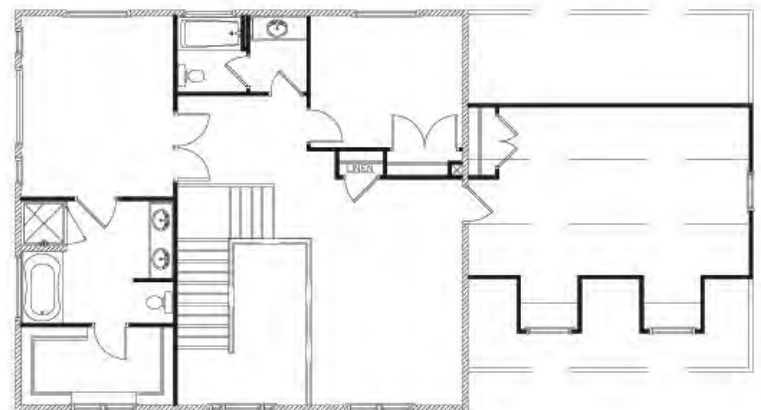
**Total Livable: 3,498\***

\* Total livable space includes the finished basement option

Basement



2nd Floor



# Cardiff Floor Plan



## Square Footage

**Main Floor: 1,237**  
**Second Floor: 1,669**  
**Basement: 1,247**

**Total Livable: 4,153\***

## Room Options

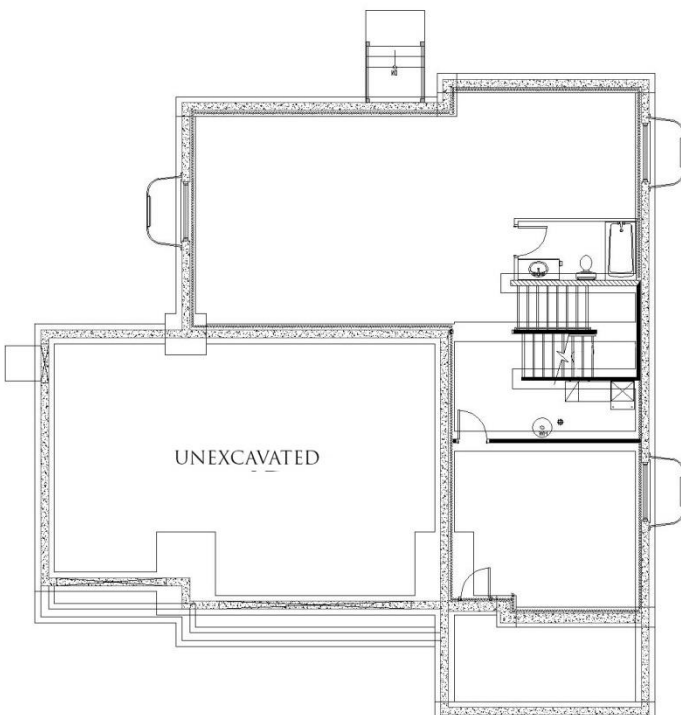
**Bedrooms: 4 - 5**  
**Bathrooms: 3**  
**Garage: 2 or 3 car**

\* Total livable space includes the finished basement option

Main Floor



Basement



2nd Floor



# Rincon Floor Plan



## Square Footage

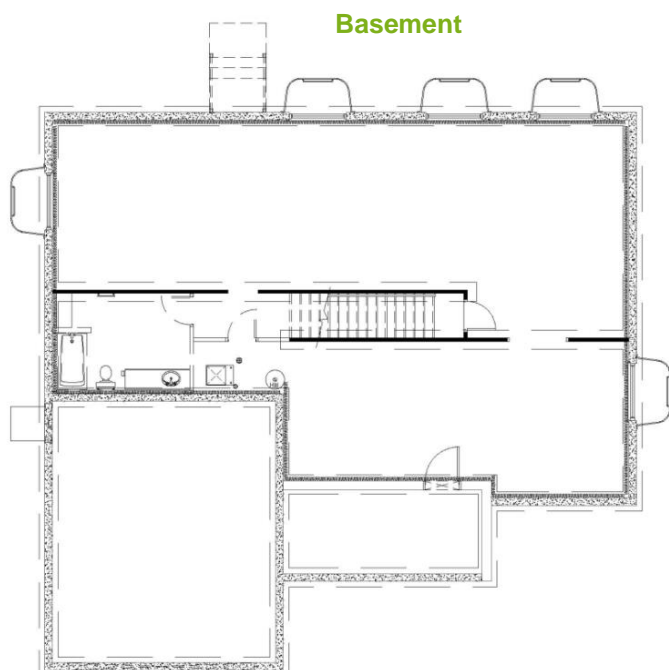
**Main Floor: 1,578**  
**Second Floor: 951**  
**Basement: 1,493**

## Room Options

**Bedrooms: 5**  
**Bathrooms: 2**  
**Garage: 2 or 3 car**

**Total Livable: 4,022\***

\* Total livable space includes the finished basement option



# Maverick Floor Plan



## Square Footage

**Main Floor: 2,037**  
**Second Floor: 995**  
**Basement: 1,882**

**Total Livable: 4,914\***

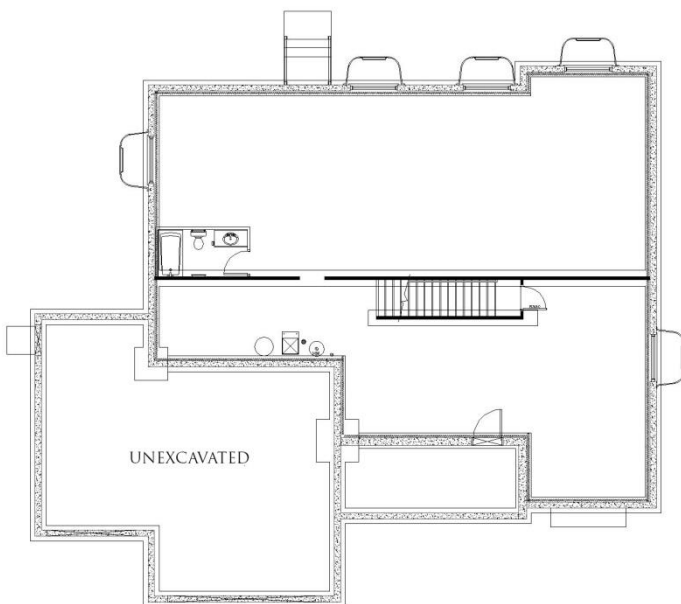
## Room Options

**Bedrooms: 4**  
**Bathrooms: 4**  
**Garage: 2 or 3 car**

\* Total livable space includes the finished basement option



## Basement



## 2nd Floor



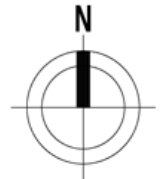
# Community Map



## Distance to Nearby Amenities

-Groceries	.9 mi
-Station Park	.6 mi
-UTA Frontrunner Farmington Station (00:29 to Downtown SLC)	.4 mi
-Endeavor Elementary School	1.7 mi
-Farmington Jr. High School	1.4 mi
-Davis High School	3.3 mi
-9 Parks within	.6 - 2 mi
-21 Restaurants within	.6 - 2 mi
-Movie Theatre	.6 mi
-Banking	1.6 mi

**Note:** Individual lot sizes range between 20,079 sq ft (lot 19) and 9,741 sq ft (lot 23).









# CLEARWATER

H O M E S

**Sarah Mayer**

**801.218.2885**

[sarah@clearwaterhomesutah.com](mailto:sarah@clearwaterhomesutah.com)

Scan or click to tour  
model homes



[www.MeadowViewUtah.com](http://www.MeadowViewUtah.com)



*In accordance with the law, all of our properties are offered without respect to race, gender, color, creed, familial status, national origin or handicap.*